

NEW

Usable for **STORAGE TRANSPORT MFH**

Characteristics:

- ISPM 15 / IPPC
- Chamber-dried
- 800 x 1200 x 144 mm
- Guaranteed nominal load: 1,500 kg
- Max. 22% residual moisture

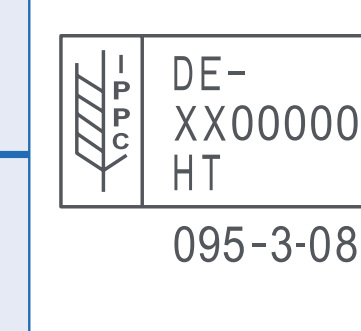
No signs of use,
light-coloured wood,
no splinters caused by user



Rough-sawn wood,
even and recurrent
nailing pattern

Key marking of the
pallet organisation
(EPAL, EUR possible)

All base boards are
chamfered on both edges



IPPC identifier, manufacturer
identifier or license number,
control quality staple

CAUTION: Lightness alone does not ensure affiliation to the NEW class.
Do check on the grading criteria of the following classes

CLASS A

Usable for **STORAGE TRANSPORT MFH**

Characteristics:

- Light wood colour
- Pallet has already been used
- ISPM 15 / IPPC not guaranteed
- Max. 22% residual moisture

No splinters caused
by user

No adhesions e.g. card-
board, film, tapes, labels

Licensed repair allowed control quality
staple and/or repair nailing

Signs of use, but no
contamination

No skewed blocks

CAUTION: Lightness alone does not ensure affiliation to class A.
Do check on the grading criteria of the following classes

Legibility of all the
prescribed key markings
(EPAL, UIC, EUR possible)

CLASS B

Usable for **STORAGE TRANSPORT MFH**

Characteristics:

- Dark wood colour
- On assessing whole stacks a dark/
light mixture possible
- Pallet has already been used
- ISPM 15 / IPPC not guaranteed
- Max. 22% residual moisture

No splinters caused
by user

No adhesions e.g. card-
board, film, tapes, labels

Licensed repair allowed control quality
staple and/or repair nailing

Signs of use, wood
subsequent darkening
permitted

No skewed blocks

Legibility of all the
prescribed key markings
(EPAL, UIC, EUR possible)

CLASS C

Usable for **STORAGE TRANSPORT**

Characteristics:

- Pallet has already been used
- ISPM 15 / IPPC not guaranteed

Surface moisture
resulting from use, e.g.
fruit or vegetables

Signs of use, wood
subsequent darkening
permitted

Slightly skewed blocks,
(≤ 1 cm of overhang)



Adhesions permitted e.g.
cardboard, film, tapes, labels
Higher classification possible
once removed

Contamination that cannot be
passed onto the product

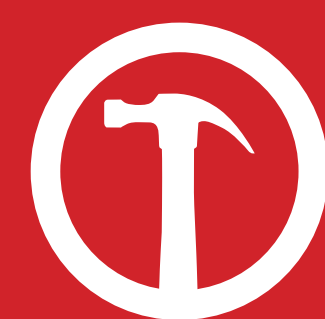
Licensed repair allowed control quality
staple and/or repair nailing

Key identification of the
pallet organisation at least
legible on one block

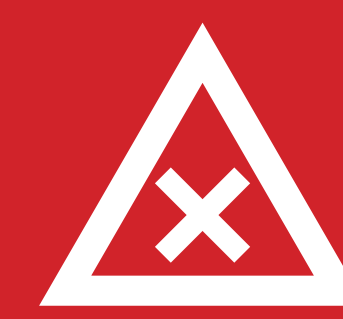
Splinters permitted

CAUTION: A max. 1 nail shank per construction element, a maximum total of 2 nail shanks visible at the pallet the tips of which are not visible or exposed

NOT USABLE



Approved eradication of faults by
users for quality
classification
(A, B, C):



REPAIR only
permitted by duly
licensed repair
company:

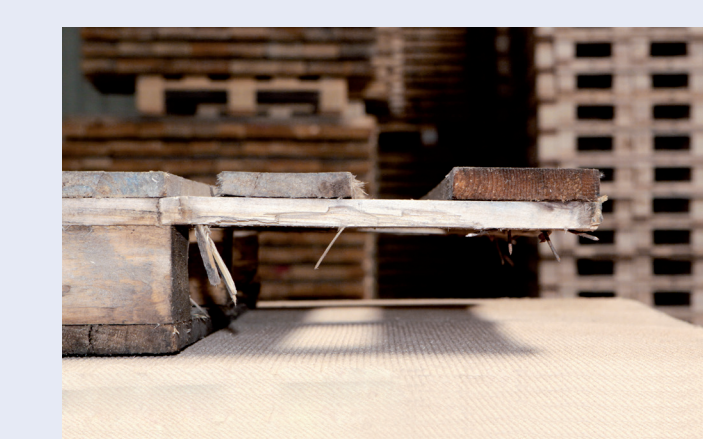
Without being repaired, pallets with these faults must not be used in the open pallet exchange pool



Hammering down projecting
fastening elements



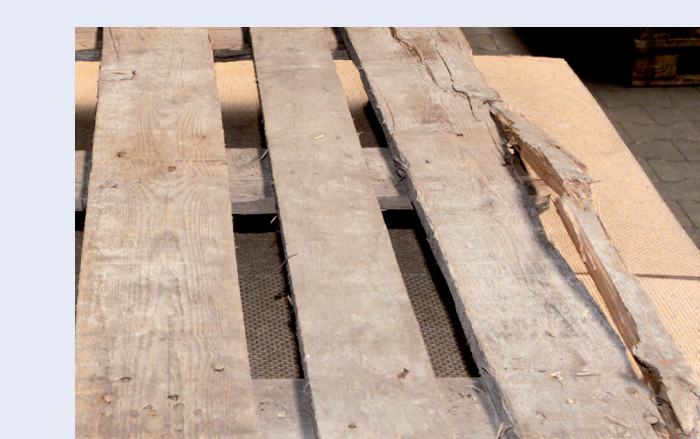
Drying/cleaning soaked boards



Missing component



Inadmissible component e.g. under-
dimensioned, woodwormeaten, wane



Stringer, partially or fully
fractured board



Skewed block
> 1cm



Visible fastening elements
e.g. nails



Contaminations which can be passed
onto the products e.g. paint, oil, smell,
mould, mould stains etc.



Inadmissible
repair



No longer any prescribed
identification legible

Contact

GS1 Germany GmbH · Maarweg 133 · 50825 Köln · Phone: +49 (0) 221 94714 - 0 · Fax: +49 (0) 221 94714 - 990 · info@gs1-germany.de · www.gs1-germany.de
European Pallet Association e.V. · Wahlerstraße 28 · D-40472 Düsseldorf · Phone: +49 (0) 211 98 480 48 - 0 · Fax: +49 (0) 211 98 480 48 - 48 · info@epal-pallets.org · www.epal.eu

Handed over by: